

Specifications

Models	Z-40/23N		Z-40/23N RJ	
Measurements	Metric	US	Metric	US
Working height maximum*	14.32 m	46 ft 5 in	14.32 m	46 ft 5 in
Platform height maximum	12.32 m	40 ft 5 in	12.32 m	40 ft 5 in
Horizontal reach maximum	6.91 m	22 ft 8 in	6.91 m	22 ft 8 in
Up and over clearance maximum	6.48 m	21 ft 3 in	6.48 m	21 ft 3 in
A Platform length	0.76 m	2 ft 6 in	0.76 m	2 ft 6 in
B Platform width	1.42 m	4 ft 8 in	1.17 m	3 ft 10 in
C Height - stowed	1.98 m	6 ft 6 in	1.98 m	6 ft 6 in
D Length - stowed	6.53 m	21 ft 5 in	6.53 m	21 ft 5 in
E Width	1.50 m	4 ft 11 in	1.50 m	4 ft 11 in
F Wheelbase	1.96 m	6 ft 5 in	1.96 m	6 ft 5 in
G Ground clearance - center	24.1 cm	9.5 in	24.1 cm	9.5 in

Productivity

Lift capacity	227 kg	500 lbs	227 kg	500 lbs															
Platform rotation	180°	180°	180°	180°															
Vertical jib rotation	128°	128°	128°	128°															
Horizontal jib rotation	—	—	180°	180°															
Turntable rotation	355° non-continuous		355° non-continuous																
Turntable tailswing	0.13 m	5 in	0.13 m	5 in															
Drive speed - stowed	7.2 km/h	4.5 mph	7.2 km/h	4.5 mph															
Drive speed - raised**	1.1 km/h	0.68 mph	1.1 km/h	0.68 mph															
Gradeability - stowed***	30%	30%	30%	30%															
Turning radius - inside	0.87 m	2 ft 11 in	0.87 m	2 ft 11 in															
Turning radius - outside	3.20 m	10 ft 6 in	3.20 m	10 ft 6 in </tr <tr> <td>Controls</td> <td colspan="2">24 V DC proportional</td> <td colspan="2">24 V DC proportional</td> </tr> <tr> <td>Tyres - front</td> <td>56x18x45 cm</td> <td>22x7x17.75 in</td> <td>56x18x45 cm</td> <td>22x7x17.75 in</td> </tr> <tr> <td>Tyres - rear</td> <td>64x18 cm</td> <td>25.6 x 7 in</td> <td>64x18 cm</td> <td>25.6 x 7 in</td> </tr>	Controls	24 V DC proportional		24 V DC proportional		Tyres - front	56x18x45 cm	22x7x17.75 in	56x18x45 cm	22x7x17.75 in	Tyres - rear	64x18 cm	25.6 x 7 in	64x18 cm	25.6 x 7 in
Controls	24 V DC proportional		24 V DC proportional																
Tyres - front	56x18x45 cm	22x7x17.75 in	56x18x45 cm	22x7x17.75 in															
Tyres - rear	64x18 cm	25.6 x 7 in	64x18 cm	25.6 x 7 in															

Power

Power source	48 V DC (eight 6 V batteries)		48 V DC (eight 6 V batteries)	
	350 Ah capacity		350 Ah capacity	
Drive system	29 V 3 phase AC		29 V 3 phase AC	
Auxiliary power unit	24 V DC	24 V DC	24 V DC	24 V DC
Hydraulic tank capacity	30.3 L	8 gal	30.3 L	8 gal

Sound & Vibration Levels

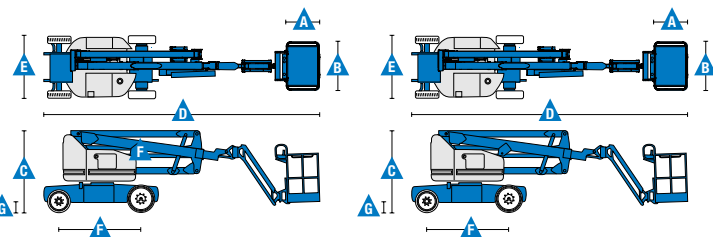
Sound pressure level (ground)	<70 dBA	<70 dBA	<70 dBA	<70 dBA
Sound pressure level (platform)	<70 dBA	<70 dBA	<70 dBA	<70 dBA
Vibration	<2.5 m/s ²	<8 ft 2 in/s ²	<2.5 m/s ²	<8 ft 2 in/s ²

Weight****

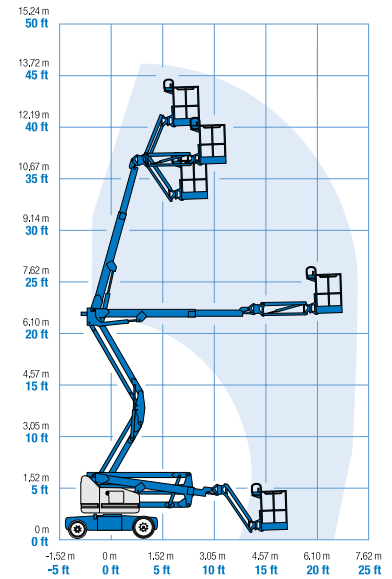
	6,908 kg	15,230 lbs	6,940 kg	15,300 lbs
--	----------	------------	----------	------------

Standards Compliance

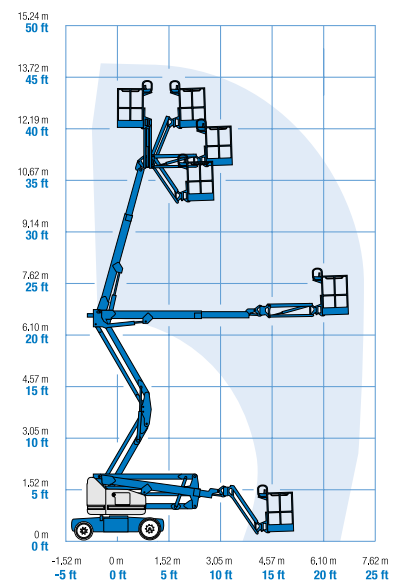
EU Directives: 2006/42/EC - Machinery (harmonized standard EN280); 2004/108/EC (EMC); 2006/95/EC (LVD)



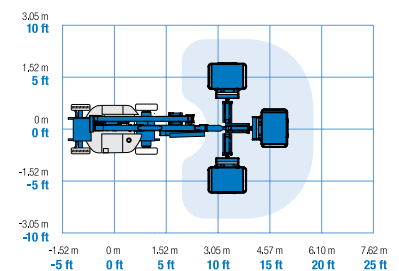
Range Of Motion Z-40/23N



Range Of Motion Z-40/23N RJ



Jib Range Of Motion Z-40/23N RJ



* The metric equivalent of working height adds 2 m to platform height. U.S. adds 6 ft to platform height.
 ** In lift mode *(platform raised), the machine is designed to operate on firm, level surfaces only.
 *** Gradeability applies to driving on slopes. See operator's manual for details regarding slope ratings.
 **** Weight will vary depending on options and/or country standards.

Features

Standard Features

Measurements

Z-40/23N & Z-40/23N RJ

- 14.32 m (46 ft 5 in) working height
- 6.91 m (22 ft 8 in) horizontal reach
- 6.48 m (21 ft 3 in) up and over clearance
- Up to 227 kg (500 lbs) lift capacity

Productivity

- 1.50 m (4 ft 11 in) width
- 0.87 m (2 ft 11 in) inside turning radius
- 1.22 m (4 ft) jib boom with 128° working range
- Self-leveling platform
- Hydraulic platform rotation
- Proportional joystick controls
- Telematics-Ready Connector
- Thumb rocker steer
- Drive enable
- Chassis tilt drive function cut-out
- AC power cord to platform
- Horn
- Hour meter
- Tilt alarm
- Descent & travel alarms
- Flashing beacon
- Hydraulic filter condition monitor
- 355° non-continuous turntable rotation
- Variable speed high efficiency hydraulic power unit
- AC electric drive system
- Traction control
- On board easy to understand diagnostics
- Zero tailswing
- Dual parallelogram for vertical wall tracking
- Lift Guard™ Contact Alarm

Power

- 48 V DC deep cycle battery pack
- 24 V DC auxiliary power
- Universal 30A battery smart charger
- Battery charge indicator
- Low battery voltage interrupt

Easily Configured To Meet Your Needs

Platform Options

- Steel 1.17 m (3 ft 10 in) (standard)
- Steel 1.42 m (4ft 8 in) (Optional, not available with rotating jib - RJ model)

Jib Options

- Articulating 1.22 m (4 ft) jib boom
- 1.22 m (4 ft) horizontal rotating jib boom

Power

- 48 V DC (eight 6 V 350 Ah batteries)

Drive

- 2 x 4 Electric AC

Tyres

- Solid rubber non-marking

Options & Accessories

Productivity

- Airline to platform
- Platform auxiliary top rail
- Power to platform: plug, socket, with optional Residual-current Circuit Breaker with Overcurrent protection
- Work lights package (2 on chassis, 2 on platform)
- Hostile environment kit ⁽¹⁾: cylinder bellow, boom wiper seals and platform control box cover
- Biodegradable hydraulic oil
- Track & Trace ⁽²⁾ (GPS unit providing machine location & operating information)
- Chassis tilt lift function cut-out (software setting)
- Lockable platform control box cover
- Tool tray ⁽³⁾

Power

- AGM Maintenance-free batteries ⁽¹⁾



⁽¹⁾ Factory-fit option only
⁽²⁾ Includes a first 2 years subscription
⁽³⁾ Aftermarket only