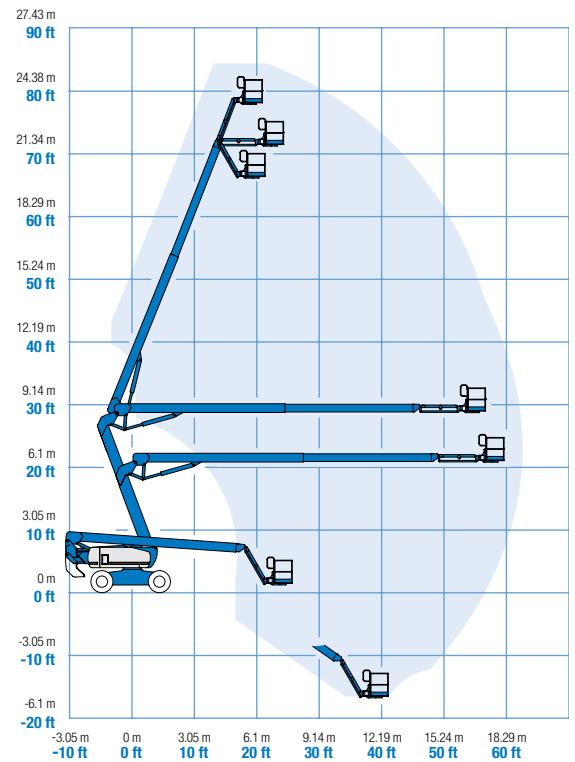


Specifications

Model		Metric	US
Measurements			
Working height maximum*	25.77 m	84 ft	
Platform height maximum	23.77 m	78 ft	
Horizontal reach maximum	18.29 m	60 ft	
Up and over clearance maximum	8.83 m	29 ft	
Below ground reach	4.83 m	15 ft 10 in	
▲ Platform length - 8 ft / 6 ft	0.91 m/0.76 m	3 ft 2 in / 2 ft 6 in	
▲ Platform width - 8 ft / 6 ft	2.44 m/1.83 m	8 ft/6 ft	
▲ Height - stowed	3.00 m	9 ft 10 in	
▲ Length - stowed	11.27 m	37 ft	
▲ Length - transport	11.27 m	37 ft	
▲ Width	2.49 m	8 ft 2 in	
▲ Wheelbase	2.85 m	9 ft 4 in	
▲ Ground clearance - center	0.30 m	12 in	
Productivity			
Lift capacity	227 kg	500 lbs	
Platform rotation	160°	160°	
Vertical jib rotation	135°	135°	
Turntable rotation	360° continuous		
Turntable tailswing - riser up	1.17 m	3 ft 10 in	
Turntable tailswing - riser down	2.24 m	7 ft 4 in	
Drive speed - stowed	4.83 km/h	3.0 mph	
Drive speed - raised**	1.1 km/h	0.68 mph	
Lift speed to full height	76 sec	76 sec	
Gradeability - 4WD - stowed***	45%	45%	
Turning radius - 2WS inside	4.42 m	14 ft 6 in	
Turning radius - 2WS outside	7.47 m	24 ft 6 in	
Turning radius - 4WS inside	2.13 m	7 ft	
Turning radius - 4WS outside	4.57 m	15 ft	
Controls	12 V DC proportional		
Tyres	18-625 NHS		

Range Of Motion Z-80/60



Power

Power source	Deutz Stage IIIB TD2.9 L4 4 cylinder turbo diesel 55 kW (74 hp) Deutz Stage IIIA TD 2011 L04i 4 cylinder turbo diesel 55 kW (74 hp)
--------------	--

Auxiliary power unit	12 V DC	12 V DC
Hydraulic tank capacity	170 L	45 gal
Fuel tank capacity	132 L	35 gal

Sound & Vibration Levels

Sound pressure level (ground workstation)	85 dBA	85 dBA
Sound pressure level (platform workstation)	74 dBA	74 dBA
Vibration	<2.5 m/s ²	<8 ft 2 in/s ²

Weight****

CE 4WD/2WS	16,284 kg	35,900 lbs
CE 4WD/4WS	17,010 kg	37,500 lbs

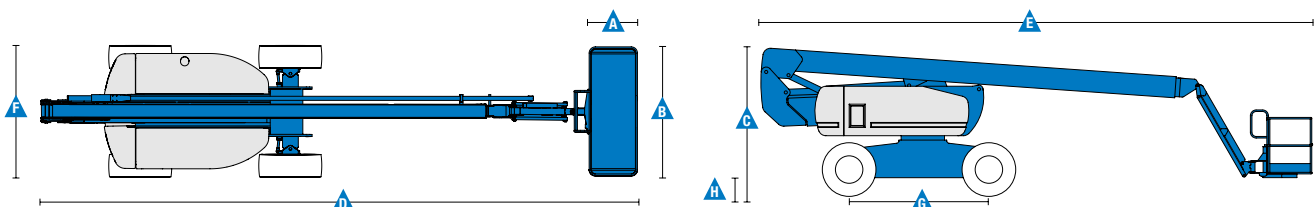
Standards Compliance EU Directives: 2006/42/EC - Machinery (harmonized standard EN280); 2004/108/EC (EMC); 2000/14/EC (Outdoor Noise)

* The metric equivalent of working height adds 2 m to platform height. U.S. adds 6 ft to platform height.

** In lift mode (platform raised), the machine is designed to operate on firm, level surfaces only.

*** Gradeability applies to driving on slopes. See operator's manual for details regarding slope ratings.

**** Weight will vary depending on options and/or country standards.



Features

Standard Features	Easily Configured To Meet Your Needs	Options & Accessories
-------------------	--------------------------------------	-----------------------

Measurements

- 25.77 m (84 ft) working height
- 18.29 m (60 ft) horizontal reach
- 8.83 m (29 ft) up and over clearance
- Up to 227 kg (500 lbs) lift capacity

Productivity

- Self-leveling platform
- Hydraulic platform rotation
- Proportional joystick controls
- Telematics-Ready Connector
- Thumb rocker steering
- On board diagnostics
- Hydraulic oil cooler
- Drive enable
- Chassis tilt drive function cut-out
- AC power cord to platform
- Horn
- Hour meter
- Tilt alarm
- Descent & travel alarms
- Flashing beacon
- 360° continuous turntable rotation
- Locking turntable covers
- Full-time positive traction drive
- Two speed wheel motors
- Four steering modes: front, rear, crab and coordinated
- Configurable controls to limit lift height to 70 ft
- Dual parallelogram for vertical wall tracking
- Lift Guard™ Contact Alarm

Power

- 12 V DC auxiliary power
- Anti-restart engine protection
- Auto engine fault shutdown
- Engine monitoring display
- Dual battery
- Engine status display
- Intake air heater (Deutz engine)

Axle

- Active oscillation

Platform Options

- Steel 2.44 m (8 ft) tri-entry with side swing gate (standard)
- Steel 1.83 m (6 ft) dual entry with side swing gate

Jib

- Articulating 1.83 m (6 ft) jib boom with 135° range

Engine Options

- Deutz turbo diesel 55 kW (74 hp), Stage IIIB
- Deutz turbo diesel 55 kW (74 hp), Stage IIIA

Drive/Steer Options

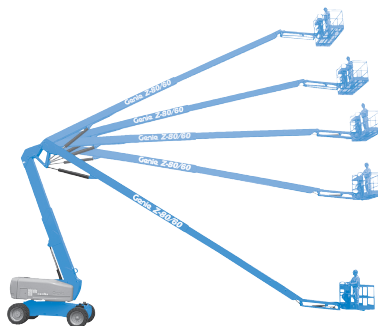
- 4 x 4 x 2 (standard)
- 4 x 4 x 4

Axle

- Active Oscillation (standard)

Tyre Options

- Rough terrain foam-filled (standard)
- Rough terrain non-marking foam-filled



Productivity Options

- Half-mesh platform inserts
- Platform auxiliary top rail
- Air line to platform ⁽¹⁾
- Power to platform: plug, socket, with optional Residual-current Circuit Breaker with Overcurrent protection
- Work lights package (2 on chassis, 2 on platform) ⁽¹⁾
- Dual axis joystick steering ⁽¹⁾
- Biodegradable hydraulic oil
- Aircraft protection kit ^(1,4): platform foam padding and platform disable system
- Hostile environment kit ⁽¹⁾: cylinder bellows, boom wiper seals, platform and ground control box covers
- Deluxe hostile environment kit ⁽¹⁾: adds to basic kit center turntable shield, ring gear guard, tail pipe guard, engine cover flaps and air pre-cleaner
- Track & Trace ⁽²⁾ (GPS unit providing machine location & operating information)
- Chassis tilt lift function cut-out (software setting)
- Lockable platform control box covers
- Operator Protective Structure ⁽³⁾
- Tool Tray ⁽³⁾
- Fall Arrest Bar ⁽³⁾

Power Options

- AC generator packages (110V/60Hz - 220V/50Hz, 3000W)
- Diesel air intake pre-cleaner ⁽¹⁾
- Diesel catalytic scrubber muffler ⁽¹⁾ (Stage IIIA engine only)
- Low temperature cut-out module
- EMEAR Cold Start kit: Inc. Engine heater & battery charger
- Cold weather packages ⁽¹⁾

⁽¹⁾ Factory-fit option only

⁽²⁾ Includes a first 2 years subscription

⁽³⁾ Aftermarket only

⁽⁴⁾ Reduces load capacity of about 27 kg (60 lb). Only available with 1.83 m (6 ft) platform, not available with any other platforms nor options on the platform